



5" Seamless Rollformer



New upright, tension brake, aluminum spool and coil scale

2 YEAR WARRANTY
ON PARTS & LABOR

Standard Equipment

- Front pull guillotine
- Seven station aluminum box
- Emergency shutdown switch
- Easy adjust entrance guides
- Two quick release runout stands

Standard Upright System

- 2 spool turnstile upright & 2 aluminum spools
- New aluminum spools less than half the weight of steel spools
- Modular upright system distributes the weight of the coils to the floor of the vehicle, not the machine
- Coil tension brake
- Transfer bar

 **KWM**
Gutterman^{INC.}

www.kwmgutterman.com
Toll-free (888) 729-4290



5" Seamless Rollformer

Dimensions

Top of spools to the bottom of machine 46".
Width 23". Length 96" with straight blade guillotine.
99" with front pull guillotine.

Construction

3/8" steel frame welded on a jig fixture for accuracy.
Fully enclosed with 7 gauge steel sides. All parts
individually plated or painted prior to assembly.

Drive/Forming Rollers

Twelve drive forming rollers — 5 bottom, 7 top.
Rollers are 1045 high carbon steel with .002 industrial
hard chrome.

Weight

1,200 lbs.

Power

3/4 HP, high torque sealed motor. 20-1 gear reduction
unit. Machine plugs directly into 110-120V outlet.

Production

Approximately 35 feet per minute

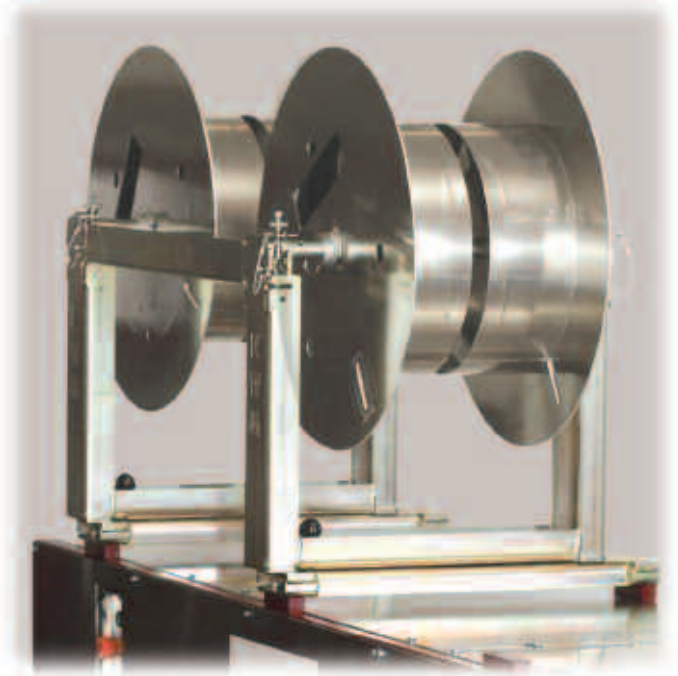
Recommended Materials

Maximum width 11 3/4" to 12 3/8"

Material	Maximum Gauge
Aluminum	.032
Painted steel	26
Copper	16 oz. 3/4 hard

Options

- Straight blade guillotine
- Additional runout support stands
- 220 volt/50hz.
- Single, double or triple spool upright available
- Turnstile machine mount cradle
- CE Certification
- 12 volt DC power
- Trailer riser pad



Quick release turnstile and transfer bars



795 South Larkin Avenue
Rockdale, Illinois 60436

Phone (815) 725-9205 • Fax (815) 725-4429

Toll-free (888) 729-4290

E-mail sales@kwmgutterman.com

www.kwmgutterman.com