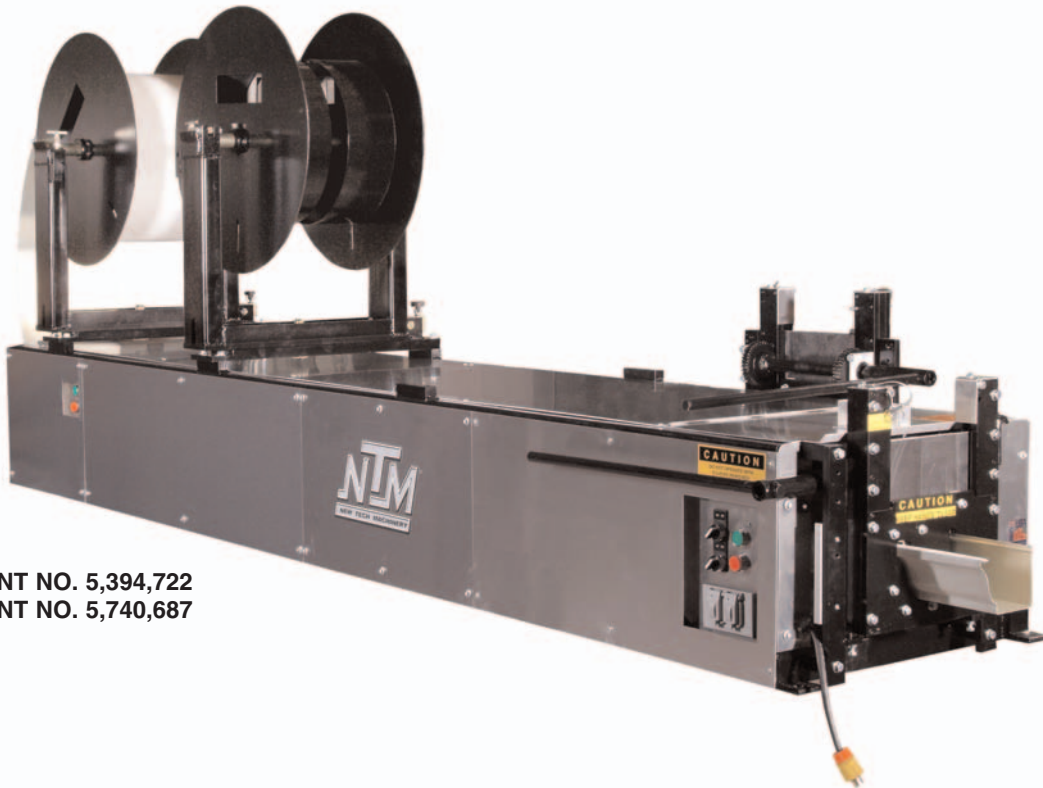




SINCE 1991

# Mach II™

Gutter Machines  
5", 6", 5-6 Combo



U.S. PATENT NO. 5,394,722  
U.S. PATENT NO. 5,740,687

**The “ORIGINAL” polyurethane drive system.**

**VERSATILE. . . INNOVATIVE. . . DEPENDABLE. . . PROFITABLE**

**New Tech Machinery’s patented Mach II™ has taken the seamless gutter industry to a new level. The only way to compete in the gutter forming business is to own a MACH II. Don’t get stuck with an imitation.**

### **STANDARD FEATURES:**

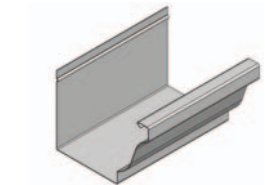
- New and Improved Polyurethane Drive Rollers
- Stainless Steel Forming Rollers
- Push Button RUN/JOG Controls at Entry and Exit Ends
- Forward Pulling, Easy Cut Shear
- Power Interruption Safety Circuit
- Two 360° Rotatable Reel Stands with Easy Lift Reels
- Electric Motor
- Welded Tubular Steel Frame

# OPTIONS

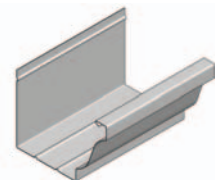
<b>ROS1</b>	Run Out Stands	<b>ELEC2</b>	3/4 Hp, 110VAC, 50 HZ, 1Ph, 11Amps
<b>RL15</b>	15" Reel (380mm)	<b>ELEC3</b>	3/4 Hp, 220VAC, 50 HZ, 1Ph, 5Amps
<b>RL20</b>	20" Reel (500mm)	<b>ELEC4</b>	1 Hp, 12VDC, 80Amps
<b>TRN</b>	Turnstile Reel Stand	<b>BB5</b>	Bottom Bead Assembly, 5"
<b>RAC</b>	Transfer Bars	<b>BB6</b>	Bottom Bead Assembly, 6"
<b>CR5</b>	5" Cradle	<b>BF5</b>	1" Back Flange for 5"
<b>CR6</b>	6" Cradle	<b>BF5SH</b>	1" Back Flange Shear for 5"
<b>GFI</b>	Ground Fault Interruption Plug	<b>BF15-5</b>	1-1/2" Back Flange for 5"
<b>HK5</b>	Alcoa Hook Assembly, 5"	<b>BF15-5SH</b>	1-1/2" Back Flange Shear for 5"
<b>HK6</b>	Alcoa Hook Assembly, 6"	<b>BF6</b>	1" Back Flange for 6"
<b>HK56</b>	Alcoa Hook Assembly, Combo	<b>BF6SH</b>	1" Back Flange Shear For 6"
<b>ELEC1</b>	3/4 Hp, 110VAC, 60 HZ, 1Ph, 11Amps	<b>BF15-6</b>	1-1/2" Back Flange for 6"
		<b>BF15-6SH</b>	1-1/2" Back Flange Shear for 6"

# SPECIFICATIONS

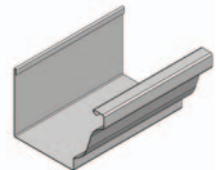
	<b>GM5</b>	<b>GM6</b>	<b>GM56C</b>
<b>Weight</b>	1000 lbs (454kg)	1250 lbs (570kg)	1350 lbs (610kg)
<b>Length</b>	8' (2.4m)	10' (3.0m)	10' (3.0m)
<b>Height</b>	3'10" (1.2m)	3'10" (1.2m)	3'10" (1.2m)
<b>Width</b>	2' (.6m) plus shear handle	2' (.6m) plus shear handle	2' (.6m) plus shear handle
<b>SPEED</b> 50 ft./min (15 m/min) Approx.	<b>MATERIALS FORMED</b>		
<b>SHEAR</b> Manually Powered, Hardened Tool Steel Blade and Dies	Steel 30 ga. to 24 ga. (.3mm to .6mm)		
<b>DRIVE</b> Electrically Driven Polyurethane Rollers	Aluminum .019" to .032" (.5mm to .8mm)		
	Copper 16 oz. to 20 oz. 3/4 Hard (.5mm to .7mm)		
	<b>MATERIAL WIDTH</b>		
	5" Machine: 11-3/4" to 12-3/8" (300mm to 315mm)		
	6" Machine: 15" (380mm)		



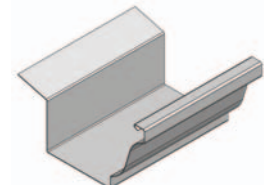
Straight Back Gutter



Gutter w/ Bottom Bead



Gutter w/ Alcoa Hook



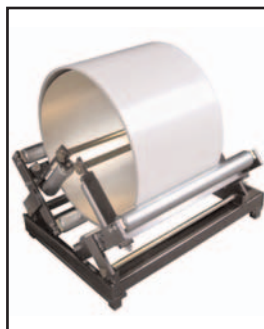
Gutter w/ Back Flange

**NOTE:** Requires 10 gauge, 15 Amp Extension Cord.

- Limited three year parts / one year labor
- Limited lifetime separation on drive rollers
- Limited lifetime on stainless steel forming rollers



Shear



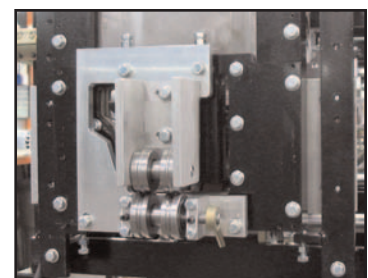
Coil Cradle



Run Out Stand



Push Button Controls



Bottom Bead