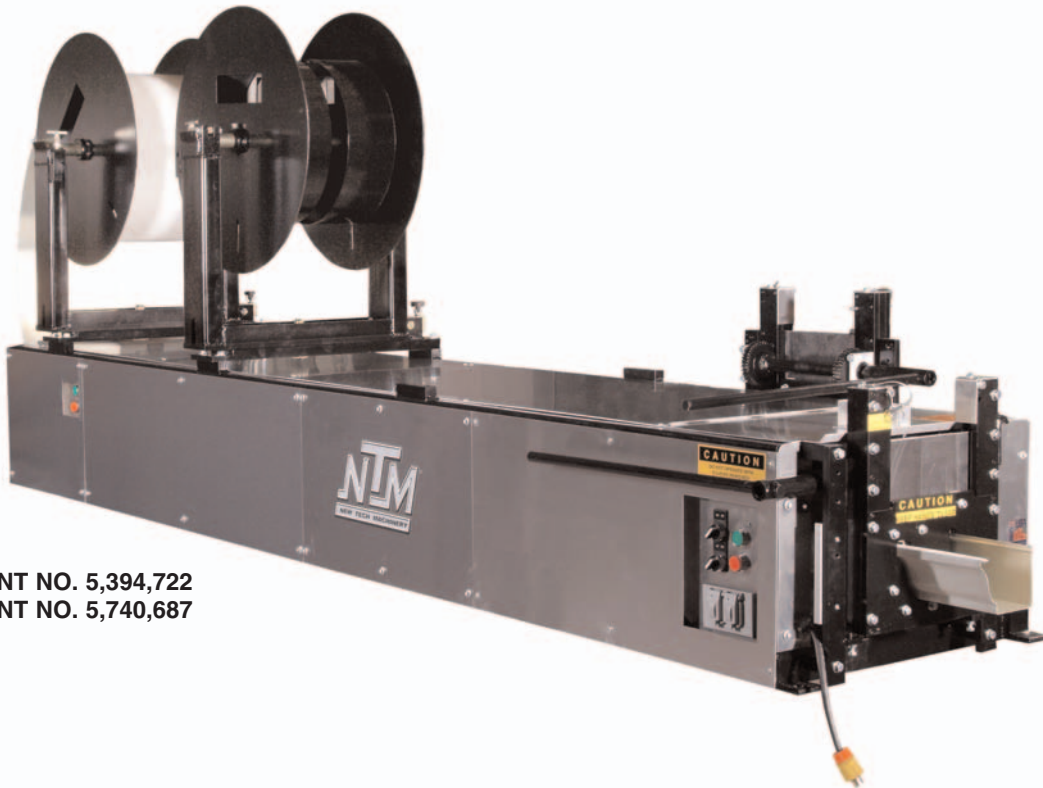




SINCE 1991

Mach II™

Gutter Machines
5", 6", 5-6 Combo



U.S. PATENT NO. 5,394,722
U.S. PATENT NO. 5,740,687

The “ORIGINAL” polyurethane drive system.

VERSATILE. . . INNOVATIVE. . . DEPENDABLE. . . PROFITABLE

New Tech Machinery’s patented Mach II™ has taken the seamless gutter industry to a new level. The only way to compete in the gutter forming business is to own a MACH II. Don’t get stuck with an imitation.

STANDARD FEATURES:

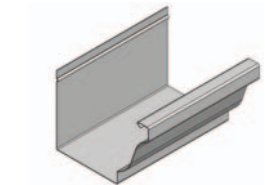
- New and Improved Polyurethane Drive Rollers
- Stainless Steel Forming Rollers
- Push Button RUN/JOG Controls at Entry and Exit Ends
- Forward Pulling, Easy Cut Shear
- Power Interruption Safety Circuit
- Two 360° Rotatable Reel Stands with Easy Lift Reels
- Electric Motor
- Welded Tubular Steel Frame

OPTIONS

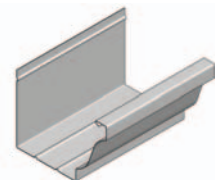
ROS1	Run Out Stands	ELEC2	3/4 Hp, 110VAC, 50 HZ, 1Ph, 11Amps
RL15	15" Reel (380mm)	ELEC3	3/4 Hp, 220VAC, 50 HZ, 1Ph, 5Amps
RL20	20" Reel (500mm)	ELEC4	1 Hp, 12VDC, 80Amps
TRN	Turnstile Reel Stand	BB5	Bottom Bead Assembly, 5"
RAC	Transfer Bars	BB6	Bottom Bead Assembly, 6"
CR5	5" Cradle	BF5	1" Back Flange for 5"
CR6	6" Cradle	BF5SH	1" Back Flange Shear for 5"
GFI	Ground Fault Interruption Plug	BF15-5	1-1/2" Back Flange for 5"
HK5	Alcoa Hook Assembly, 5"	BF15-5SH	1-1/2" Back Flange Shear for 5"
HK6	Alcoa Hook Assembly, 6"	BF6	1" Back Flange for 6"
HK56	Alcoa Hook Assembly, Combo	BF6SH	1" Back Flange Shear For 6"
ELEC1	3/4 Hp, 110VAC, 60 HZ, 1Ph, 11Amps	BF15-6	1-1/2" Back Flange for 6"
		BF15-6SH	1-1/2" Back Flange Shear for 6"

SPECIFICATIONS

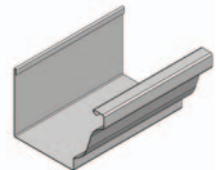
	GM5	GM6	GM56C
Weight	1000 lbs (454kg)	1250 lbs (570kg)	1350 lbs (610kg)
Length	8' (2.4m)	10' (3.0m)	10' (3.0m)
Height	3'10" (1.2m)	3'10" (1.2m)	3'10" (1.2m)
Width	2' (.6m) plus shear handle	2' (.6m) plus shear handle	2' (.6m) plus shear handle
SPEED 50 ft./min (15 m/min) Approx.	MATERIALS FORMED		
SHEAR Manually Powered, Hardened Tool Steel Blade and Dies	Steel 30 ga. to 24 ga. (.3mm to .6mm)		
DRIVE Electrically Driven Polyurethane Rollers	Aluminum .019" to .032" (.5mm to .8mm)		
	Copper 16 oz. to 20 oz. 3/4 Hard (.5mm to .7mm)		
	MATERIAL WIDTH		
	5" Machine: 11-3/4" to 12-3/8" (300mm to 315mm)		
	6" Machine: 15" (380mm)		



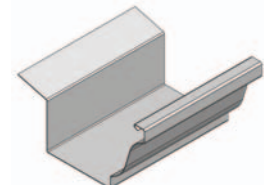
Straight Back Gutter



Gutter w/ Bottom Bead



Gutter w/ Alcoa Hook



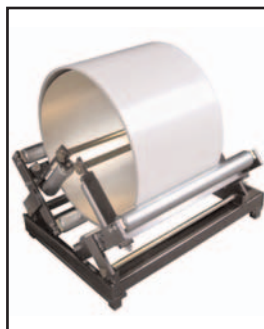
Gutter w/ Back Flange

NOTE: Requires 10 gauge, 15 Amp Extension Cord.

- Limited three year parts / one year labor
- Limited lifetime separation on drive rollers
- Limited lifetime on stainless steel forming rollers



Shear



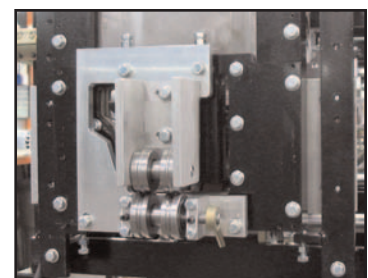
Coil Cradle



Run Out Stand



Push Button Controls



Bottom Bead